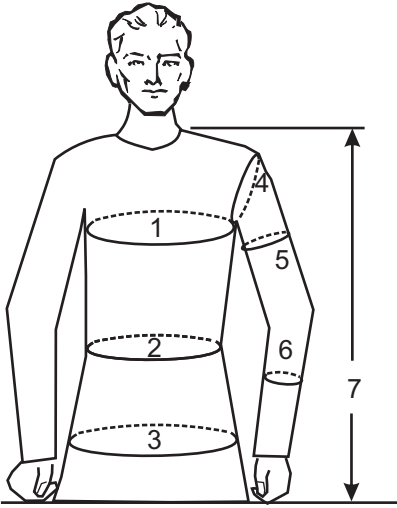
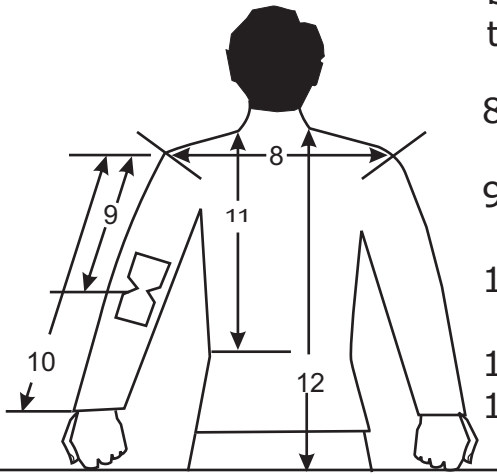


Jacket

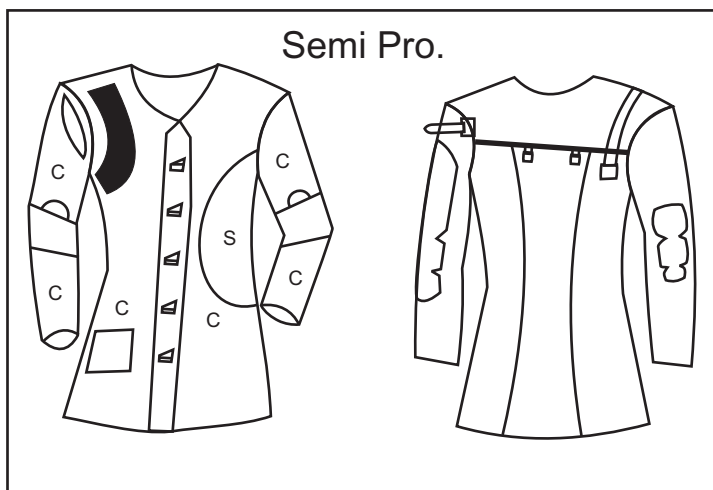
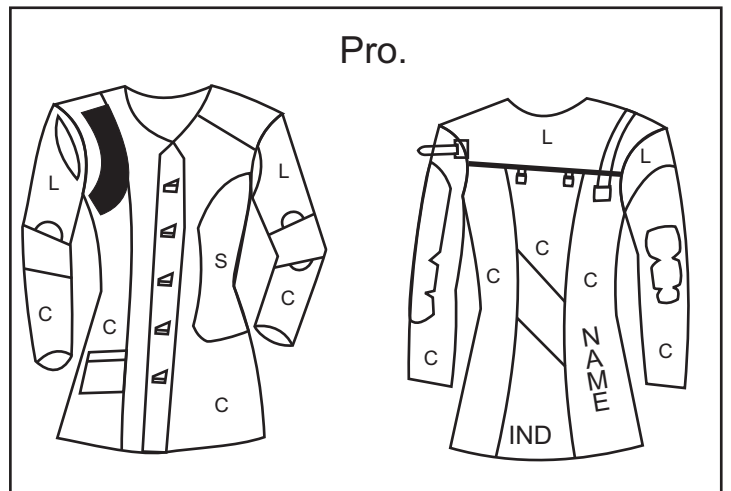
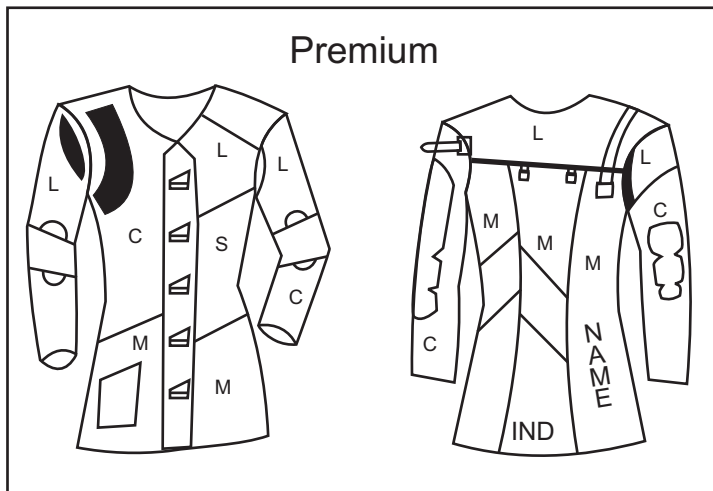


1. Around Chest Maximum point Cm. / Inch.
2. Around Waist Maximum point Cm. / Inch.
3. Around hips Maximum point Cm. / Inch.
4. Around Shoulder at the edge of shoulder bone Cm. / Inch.
5. Around upper Arm Maximum Cm. / Inch.
6. Around Arm below elbow Cm. / Inch.
7. The distance between the highest point of the shoulder at the neck and bottom of the fist. Cm. / Inch.

* The shooting Jacket must not be longer than the bottom of the fist when the Arm is straight .



8. the distance between the edges of the shoulder bones. Cm. / Inch.
9. the distance between shoulder bones to elbow. (Upper Arm length) Cm. / Inch.
10. Total Arm length out side edge of the shoulder bone to wrist bone Cm. / Inch.
11. Back length to waist . Cm. / Inch.
12. Total length of back from neck to end of the fists. Cm. / Inch.



- Right Handed Standing
- Left handed 3 Position
- Prone

L = Leather
 C = Canvas
 M = White material With Constant Stiffness
 S = Suede Leather

